



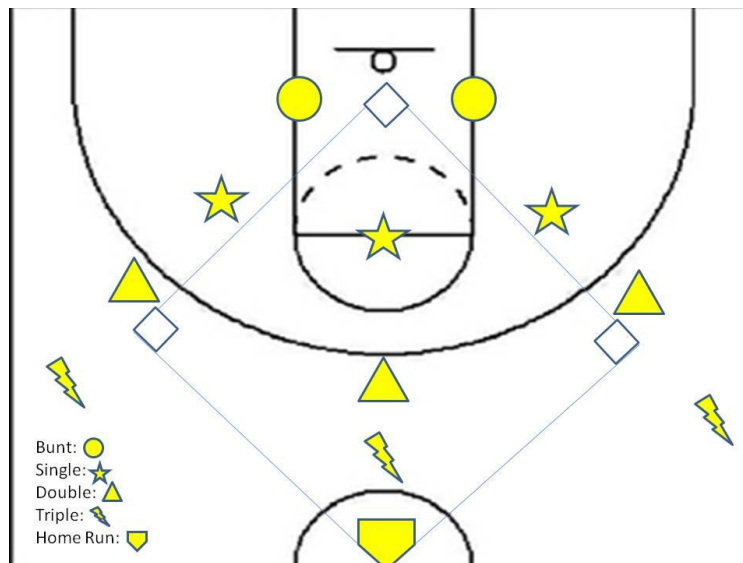
# RECREATION SERVICES

*Illinois State University*

## RecSports BASEketball Tournament RULES OF PLAY

### COURT/FIELD LAYOUT

A BASEketball court is the combination of a baseball field on a basketball court. There are four bases located on the court. There are shooting spots radiating from the hoop: three single squares, three double squares, and three triple squares. Home plate doubles as the homerun square. The two shooting locations closest to the basket are used for bunts.



### THE GAME

1. Each game will be nine innings in length or have a 40-minute time limit beginning after the first shot. The Official will determine the official start time. No inning will start after the time limit has been reached.
2. **Game time is forfeit time.** The game is played by two teams, each team consisting of a minimum of three players and a maximum of five.
3. Each game starts with a coin toss. The winner of the coin toss shall have the choice of being home or away.
4. All substitutions must be reported to the score keeper. Any player may be substituted or replaced and re-entered once, providing players occupy the same batting positions whenever in the lineup. Players may not re-enter a second time. The starting player and his/her substitute may not be in the lineup at the same time. If a player re-enters the game a second time or a player re-enters the game in a position in the batting order other than their original starting position or substitute position, this is considered an illegal re-entry.
5. No team time-outs shall be called. Only Official's time-outs for injury or at their discretion.

### DEFENSE

1. Defensive Alignment: There are three defensive players on the field. Two are located in the "outfield" waiting to rebound any missed shot. The other is located next to the shooter, attempting to psyche-out the offensive player.
2. Psyche-Outs: A diversionary tactic to break the shooter's concentration in an attempt to make them miss a shot.
  - a. An individual on defense is NOT allowed to make any contact with the individual shooting.
  - b. Degrading psyche-outs are NOT allowed.
  - c. There is NO "double teaming" in psyche-outs.

- d. A player may NOT participate in back-to-back psyche-out attempts.
- e. If a psyche-out is deemed unethical by the Official, and the shot is missed, a walk is issued.
- 3. Double Plays: If there are runners on base, and a shot is missed, the defense has the opportunity to tip in the missed shot for a double play. The defensive player can NOT have contact with the ground when tipping in the missed shot.
  - a. If the original tip-in attempt is missed, a different player on defense has an opportunity to make the tip.
  - b. The offensive player closest to home is the second player ruled out in the double-play.
- 4. There are NO triple plays.

## **OFFENSE**

- 1. The batting line-up consists of three players.
- 2. Shot Selection: Whatever square you shoot from is the amount of bases you are awarded if the shot is made (i.e., single, double).
- 3. Shot Repetition: A team may not take a shot from a previously used square until they have tried all available squares (10 in total). Homeruns can be attempted at anytime.
- 4. Outs: Failure to make a shot is an OUT.
- 5. Conversions: During a double play attempt, if the defense misses both opportunities to tip in, the offense has the chance to tip in the missed shot for a conversion.
  - a. Any player on base is allowed to leave the base they are occupying and attempt the tip in. If this tip in is made, the batter is awarded the base he shot for.
  - b. If the first tip in is missed, the batter now has the attempt to make the tip in. Once again, if the batter converts the shot, he is awarded the base he was originally attempting to make.
  - c. AFTER THE TWO ATTEMPTS AT A CONVERSION AND NO SHOT HAS BEEN MADE, THE PLAY IS RULED DEAD.
- 6. Bunting: A player may bunt at anytime. When bunting, it is a sacrifice out. Runners advance one base each, but may NOT advance home. With a bunt, no tip ins or psych-outs are allowed.

**\*\*\*The RecSports office reserves the right to put into effect any new rulings regarding RecSports policies and unsportsmanlike conduct\*\*\***

## **GENERAL INFORMATION**

- A. All RecSports participants MUST have one of the following forms of identification to play:
  - a. Valid ISU Student ID.
  - b. Valid Faculty/Staff ID with a photo ID.
  - c. Lincoln College Student ID with ISU Student Rec. Building Pass.
- B. All games will be played at Horton's North Gym. Teams are expected to report to their court and check in 10 minutes before game time.
- C. NO TOBACCO, FOOD OR BEVERAGES allowed in the Horton Field House or North Gym. Water bottles are allowed if they have a secure top.
- D. RecSports will provide game basketballs only. Teams are recommended to wear like colored shirts with numbers. Pennies will be provided for teams without uniforms. By mutual consent, teams may use their own basketball.
- E. Ejection's: Any form of physical combat (punching, kicking, etc.) at any time during one's use of the facility while a RecSports event is taking place will result in immediate ejection with further action taken on an individual basis. The officials of each game may eject any player or bystander for inappropriate behavior at any time. It is the responsibility of the team captain to make sure ejected players leave the area. Ejected players must be out of sight and sound within one minute or a forfeit may be declared.
- F. Sportsmanship: All team members, coaches, and spectators are subject to sportsmanship rules as stated in the Recreational Sports Guidelines. Each team's sportsmanship will be evaluated by RecSports officials and scorekeepers assigned to the game. Captains will have the opportunity to see their team's sportsmanship total at the end of each game. Teams may total 50 sportsmanship points each game.
- G. After one forfeit, teams become ineligible for championships.
- H. Rosters: Changes may be made to the roster up until the start of the team's second scheduled evening. Changes must be recorded on the official roster form and must be done in the presence of a RecSports supervisor. All player information must be included for any player to be eligible to participate. After this time, there will be no additions or changes allowed to the roster.
- I. Spectators: Individuals who come to watch must stand in the areas designated. No Exceptions!

**TOUCHING the basketball rim, DUNKING the basketball, or HANGING on the net at any time will result in IMMEDIATE EJECTION!!!**